

iriver

Instruction Manual

H10 [5GB pure]

iriver
www.iriver.com



Firmware Upgradable™

Thank you for your purchase.
Please read this manual carefully before using your new player.

Table of contents



▼ This manual covers the use of the H10 player hardware.
For instructions on related software and instructions for getting music on your player, please see the included iriver plus user manual.

🔌 Before using the product

Welcome	
iriver web site	
Copyrights/Certification/Trademarks/Limited Liability	1
Precautions and Safety	2

🔌 Chapter 1 | Getting started

Features of the H10	8
Components	10
Locating the controls	11
LCD screen display	14
Connecting the product	16
Installing the software	23

🔌 Chapter 2 | Quick start

Turning on / off the player and playing music	28
Controlling volume and changing modes	29

🔌 Chapter 3 | Basic operation

Playing music	32
Playlist function	38
Auto Sync function	39
Recording	40

🔌 Chapter 3 | Basic operation (continued)

Viewing images	43
Viewing text	45
Browser function	47

🔌 Chapter 4 | Useful features

Settings Menu	50
Settings menu navigation	51
Menu settings	53

🔌 Chapter 5 | Additional information

Firmware upgrade	66
Initializing H10	67
Troubleshooting	68

🔌 Chapter 6 | Appendix

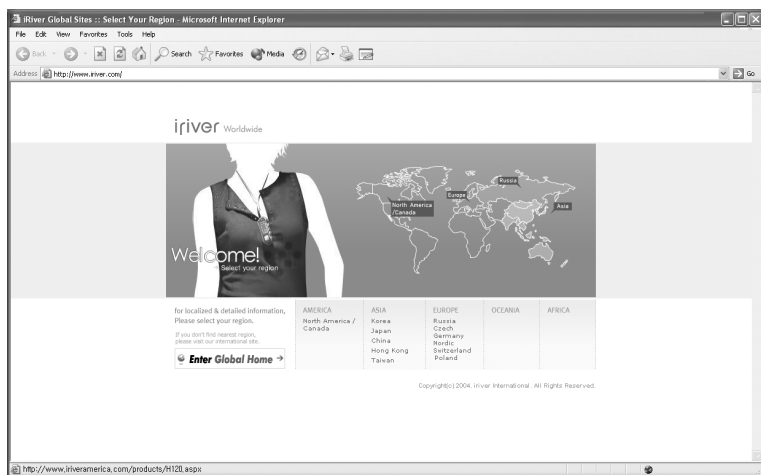
Specifications	72
FCC	73



Welcome

Thank you for purchasing the iriver H10.
 Your new player delivers a combination of style and features you can't find anywhere else.
 This instruction manual is designed to help you use the iriver H10 properly.
 It is important that you read the manual to ensure that you get the most out of your new player.
 Thank you.

iriver web site



www.iriver.com

Obtain information about your player, look for updates, and find answers to questions at our web site.

Use the firmware (system software) upgrade function of our products from the site to continuously improve the product performance.

Get the online support and check the FAQs.

Register your iriver product online so that our Customer Service is able to provide support as efficiently as possible.

In addition, you can get updated news including new products, firmware upgrade and various events by e-mail.



Copyrights/Certification/Trademarks/Limited Liability

Copyrights

iriver Limited has all the rights of the patent, trademark, literary property and intellectual property related to this manual. You may not copy or reproduce any part of this manual unless authorized by iriver Limited. You can be punished by using any part of this manual illegally.

The software, audio and video which have an intellectual property are protected by copyright and international laws. It is user's responsibilities when he/she reproduce or distribute the contents created by this product.

The companies, institutions, products, people and events used in examples are not real data. We don't have any intention to be related with any companies, institutions, products, people and events through this manual and should not draw inferences. Users are responsible for observing the copyrights and intellectual properties.

© 1999~2005 iriver Limited. All rights reserved.

Certification

CE, FCC, MIC

Trademarks

Windows 2000, Windows XP and Windows Media Player are the registered trademarks of Microsoft Corp.

Limited Liability

Neither the Manufacturer, importers nor dealers is responsible for any accidental damage including bodily injury or any damage resulting from misuse or unsuitable operation by you.

The information on this manual is prepared with the current player specifications.

The manufacturer, iriver Limited, is adding new features to the product and may persistently apply new technologies hereafter.

All standards may be changed at any time without notice.



Precautions and Safety

Please read the notices before using for your safety.

Electricity

Do not overload a single power circuit.

Overheating or fire can result.



Do not kink or crease the power cable or place heavy objects on the power cable.

Fire can result from damaged power cables.



Do not handle power plug and adapter with wet hands.

Electrical Shock may result.



Firmly plug the adapter into the wall socket.

Fire can result from improper use.



Unplug the AC adapter during electrical storms.

Electrical Shock may result.



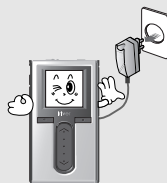
Use only the supplied AC adapter. Use of unauthorized power adapters is not recommended.

Electrical Shock may result.



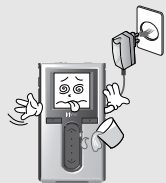
Unplug adapter when it's not in use.

Overheating or fire can result.



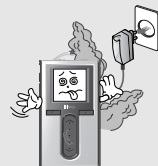
Immediately power off the player and unplug the AC adapter if water or other liquids are present.

Fire can result from improper use.



Immediately power off the player and unplug the AC adapter if smoke or odors emit from the player or adapter.

Fire can result from improper use.



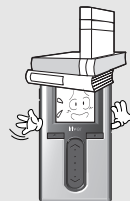
Precautions and Safety

Please read the notices before using for your safety.

Product

Do not place heavy objects on the device.

Damage to your player may result from improper use.



Keep away from harsh environments including humid, dusty, and smoky areas.

Damage to your player may result from improper use.



Avoid contact with water and other liquids.

Damage to your player may result.



Do not use water or chemicals to clean the player. Clean the surface with a soft cloth.

Damage to your player may result from improper use.



Do not clean with chemical or detergent.

Damage to your player may result from improper use.



Do not use excessive force on the buttons or attempt to disassemble the device.

Damage to your player may result from improper use.



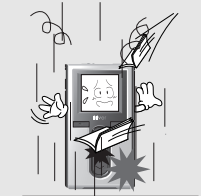
Keep out of direct sunlight and extreme heat and cold.

Damage to your player may result from improper use.



Do not drop or subject the device to impact.

Damage to your player may result from improper use.





Precautions and Safety

Please read the notices before using for your safety.

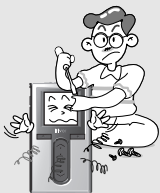
Keep the player away from strong magnets.

Damage to your player may result from magnets such as CRT, TV, monitor and speaker.



Do not disassemble or modify.

Damage to your player may result from improper use.



Do not dry the product with heater or microwave.

Damage or severe injury may result from improper use.



Bad sectors can be created in HDD because of physical impact.

Data in HDD can be damaged. Always keep a proper backup of data stored on portable devices.



When you upload or download files using USB cable, do not disconnected the USB cable suddenly or turn it off.

Data in HDD can be damaged.



Data can be damaged because of physical impact, lightning and power failure.

Users are responsible for creating backup data and iriver Limited is not responsible for any damaged data.



Precautions and Safety

Please read the notices before using for your safety.

Others

Do not use headphones / earphones while cycling, driving, or operating any motorized vehicle.

It is dangerous and is illegal in some areas.



Reduce volume while walking, especially at pedestrian crosswalk.



Do not use headphone / earphones at high volume.

Hearing experts advise against listening to continuous, loud and extended play.



Reduce volume or stop using the player if you experience a ringing in your ears.

Hearing experts advise against listening to continuous, loud and extended play.



Do not use at high volume for continuous listening.

Hearing experts advise against listening to continuous, loud and extended play.



Keep headphone/earphone cords under control to avoid getting caught on various objects.





Chapter 1 | Getting started

Features of the H10	8
Components	10
Locating the controls	11
H10 Player	11
Remote control	12
Cradle	13
LCD screen display	14
LCD screen display	14
MUSIC screen	15
RECORDING screen	15
Connecting the product	16
Connecting PC - Connecting cable	16
Connecting PC - Disconnecting cable	17
Connecting the power - connecting the adapter(player)	18
Connecting the power - connecting the adapter(cradle)	19
Connecting earphone/remote control	20
Connecting the cradle	21
Connecting the cradle - Connecting PC	21
Connecting the cradle - Line-in connection	22
Connecting the cradle - Line-out connection	22
Installing the software	23
Installing iriver plus	23

This manual covers the use of the H10 player hardware.
For instructions on related software and instructions for getting music on your player, please see the included iriver plus user manual.



Features of the H10

1 Vivid color display – 1.5-inch TFT LCD with 260,000 colors

The 1.5-inch, 260,000 color TFT LCD shows off an exciting new visual interface that makes it easy to navigate through your music.

2 Small Device – Large Capacity

The H10 features a 5GB hard drive that can hold more than 1,200 music files. (1GB = 1,000,000,000 Bytes - Not all memory available for storage.)

3 Convenient ID3 tag database

Searching with the ID3 tag database enables you to select the music file by artist, album or genre.

4 Intuitive software (iriver plus)

The intuitive software makes it easy to manage all of your music.

5 Faster file transferring – Supporting USB 2.0 interface

USB 2.0 supports transfer rates up to 480Mbps.

6 Firmware upgradeable

Firmware upgrades keep your player up to date.



Features of the H10

7 Photo and text viewer

View digital photos or text files on the player's color screen.

8 Enhanced 3D sound

SRS WOW sound effect technology provides rich bass sound and dynamic 3D sound effect.

9 Customizable EQ settings

Over 30 preset EQs to choose from and a custom user EQ.

10 Removable battery

Maximum play time can be extended with removable and rechargeable spare battery. (extra battery sold separately)

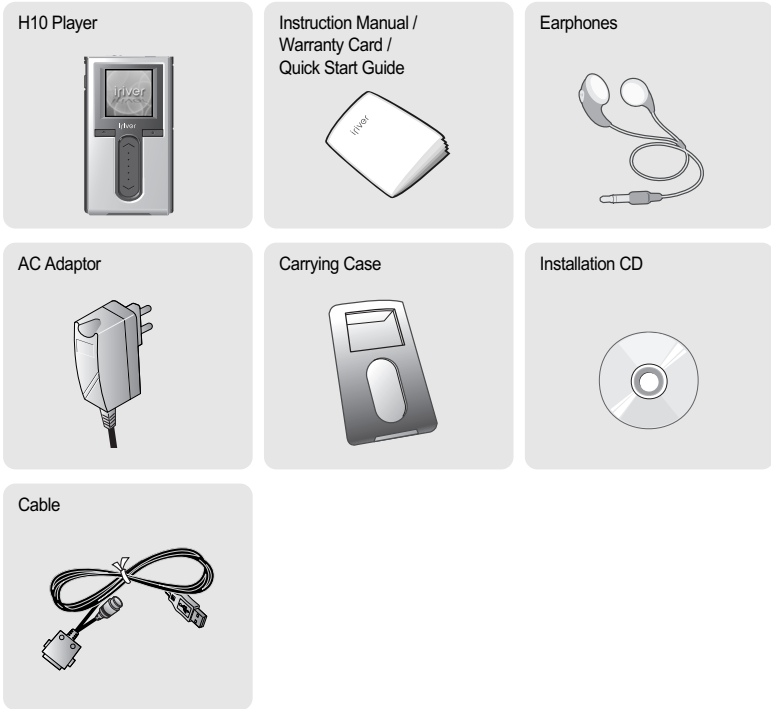
11 Easy to use touch strip

Navigating through your music is easy using convenient touch strip scrolling.

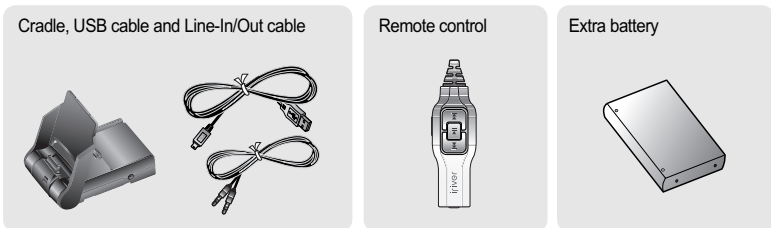


Components

Accessories subject to change without notice and may vary from image shown.



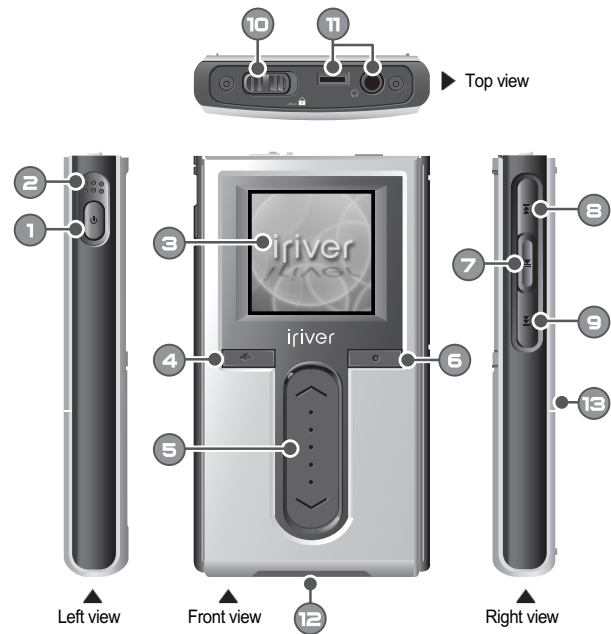
Optional Accessories



Locating the controls

Actual player may vary slightly from images shown.

H10 Player



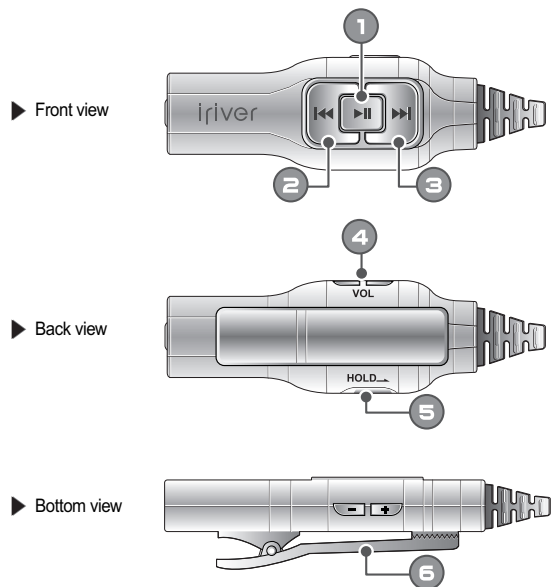
1	Power ON/OFF button	8	Previous button
2	Built-in microphone	9	Next button
3	LCD screen	10	HOLD switch
4	Cancel button	11	Earphone / Remote control jack
5	Up / Down scroll button	12	USB / Adapter jack
6	Select button	13	Battery release button
7	Play / Pause button		



Locating the controls

Actual player may vary slightly from images shown.

Remote control (Remote control is an optional accessory.)



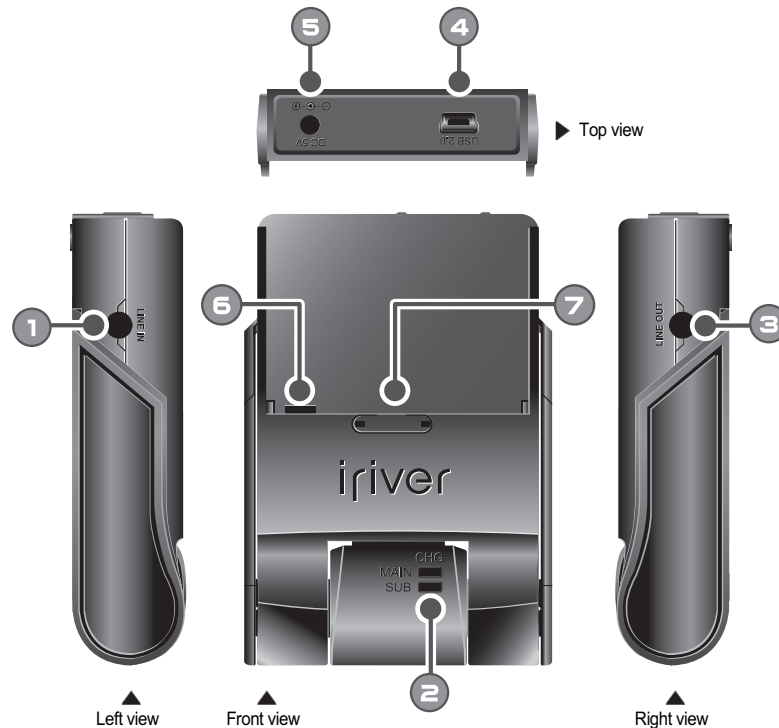
1	Power ON, OFF / Play / Pause button		
2	Previous button	5	HOLD switch
3	Next button	6	Clip
4	Volume control button		



Locating the controls

Actual player may vary slightly from images shown.

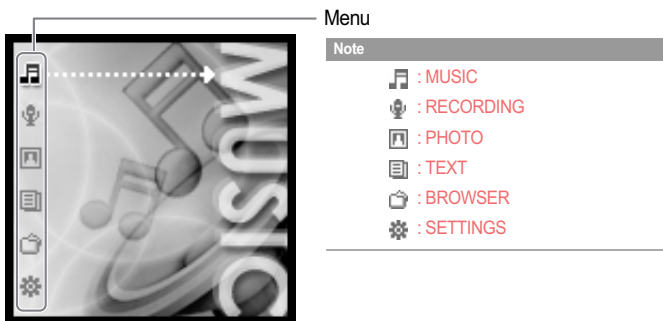
Cradle (Cradle is an optional accessory.)



1	Line in jack	5	DC 5V jack
2	Charging indicator	6	Battery charging jack
3	Line Out jack	7	Battery release button
4	USB 2.0 jack		

LCD screen display

LCD screen display



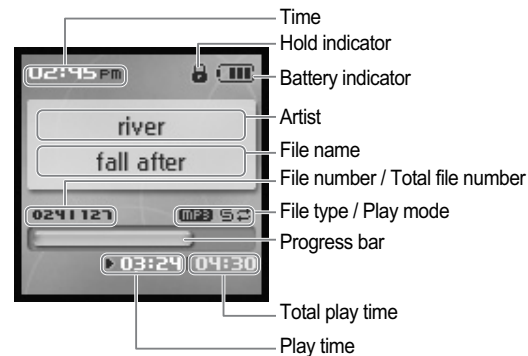
Note

Menu Examples



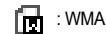
LCD screen display

MUSIC screen



Note

The following icons are displayed to indicate the type of file playing.



RECORDING screen



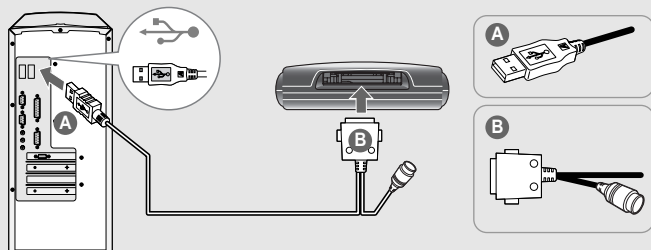


Connecting the product

This manual covers the use of the H10 player hardware. For instructions on related software and instructions for getting music on your player, please see the included iriver plus user manual.

Connecting PC – Connecting cable

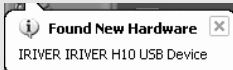
- 1 Connect the included USB cable to the port on the H10 then to an open USB port on your computer.



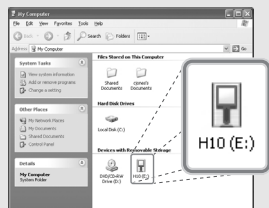
- 2 Power on the player by pressing the [] button. The LCD screen will display <USB Connected>.



- 3 Windows may show "Found New Hardware" when the player is first attached.



- 4 The H10 will display as a new device under My Computer.



- 5 The H10 is now installed and working properly. Please see the included iriver plus user guide for steps to load music onto the player.



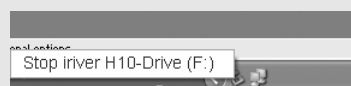
Connecting the product

Connecting PC – Disconnecting cable

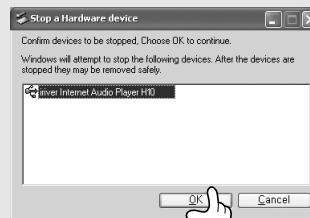
- 1 Click the icon on the system tray.



- 2 Click the popup message as shown below.



- 3 When the "Safe To Remove Hardware" popup window appears, click the [OK] button and disconnect the USB cable from PC.



Note

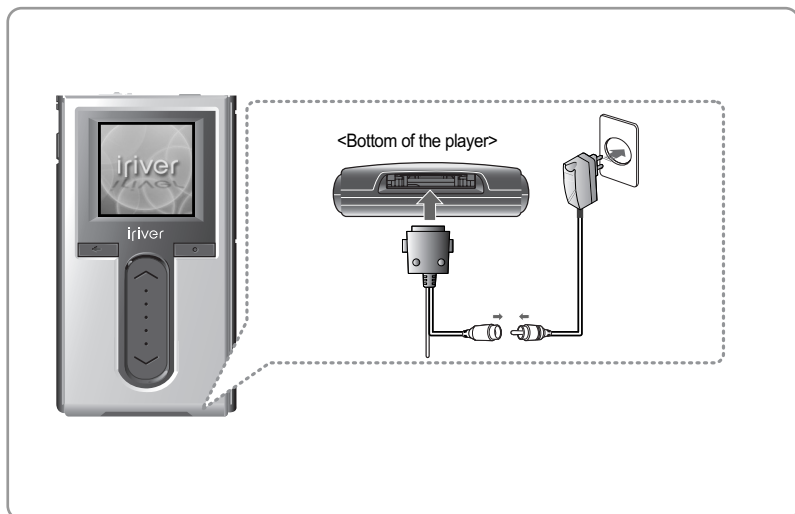
- The tray icon may be hidden in some Windows XP operating system settings. Click the "Display hidden icon" to view the hidden icon.
- Hardware safe removal may not be available while using some applications such as Windows Explorer or Windows Media Player. Please close all applications using the player before the hardware safe removal process.
- In some Windows XP operation system settings, hardware safe removal is temporarily unavailable due to some internal system communication. Wait for a moment and try it again.

Connecting the product

Be sure to use the supplied AC adapter to connect the cable to the player.

Connecting the power – connecting the adapter (player)

1. Connect the supplied cable to the player.
2. Connect the AC adapter to the DC jack on the cable.
3. Connect the AC adapter plug to a power socket.
AC adapter for this product is 100~240V, 50~60Hz.



Note

- If a power source is connected, the charging indicator on the DC jack will illuminate.
(The charge indicator will dim after charging is complete.)

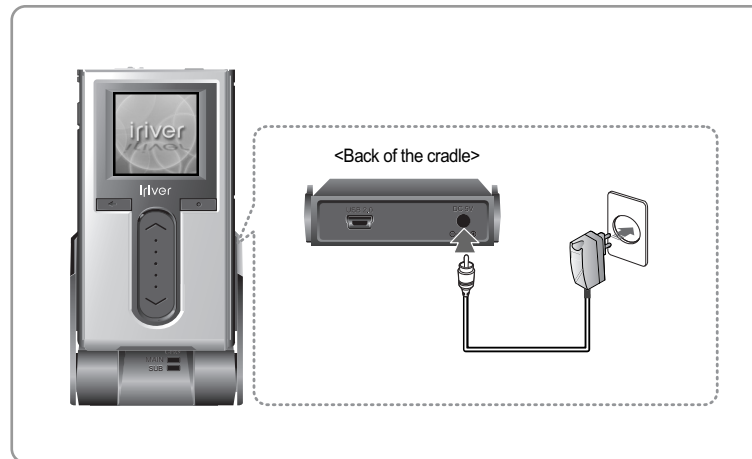
Connecting the product

Be sure to use the supplied AC adapter to connect the cable to the player.

Connecting the power – connecting the adapter (cradle)

(Cradle is an optional accessory.)

1. Put the player into the connection terminal of the cradle.
2. Connect the AC adapter to the cradle's 5.0V DC connector.
3. Connect the AC adapter plug to a power socket.



Note

- If a power source is connected, the charging indicator will illuminate.
(The charge indicator will dim after charging is complete.)

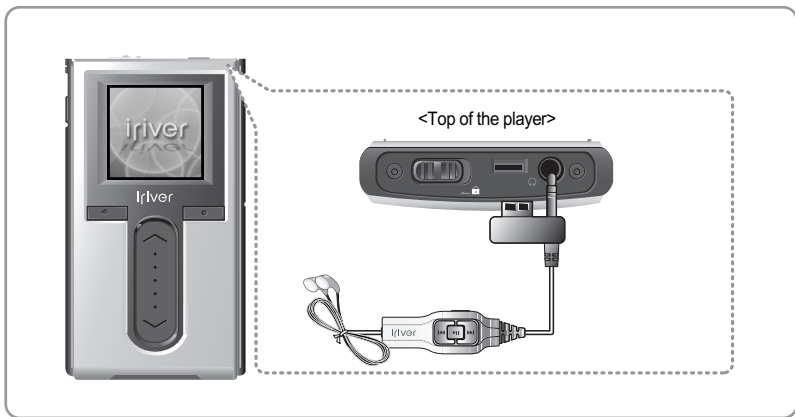
Connecting the product

Be sure to use the supplied AC adapter to connect the cable to the player.

Connecting earphone/remote control

(Remote control is an optional accessory.)

1. Connect the remote control to the jack on the top of the player.
2. Connect the earphone to the jack of the remote control.



Connecting the product

Connecting the cradle

(Cradle is an optional accessory.)

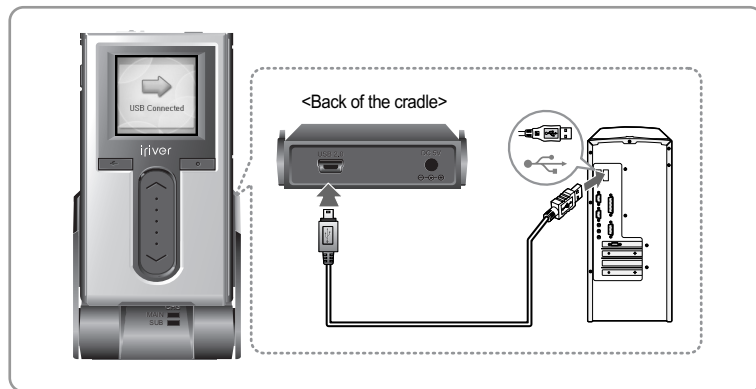
1. Put the player into the connection terminal of the cradle.



Connecting the cradle – Connecting PC

(Cradle is an optional accessory.)

1. Put the player into the connection terminal of the cradle.
2. Connect the USB 2.0 jack of the cradle to a PC with USB cable. (USB cable is an optional accessory.)

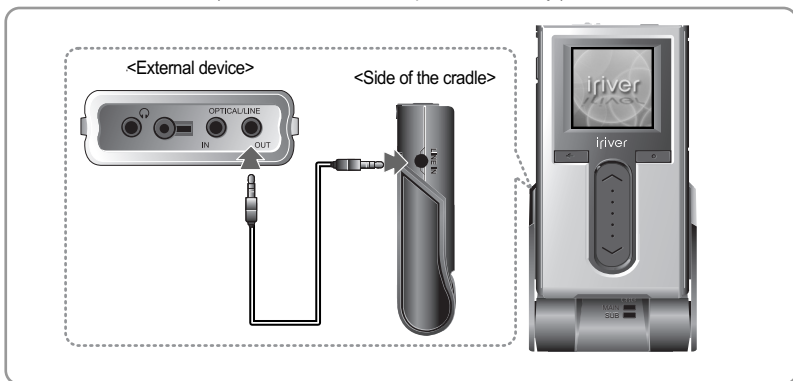


Connecting the product

Connecting the cradle – Line-In connection

(Cradle is an optional accessory.)

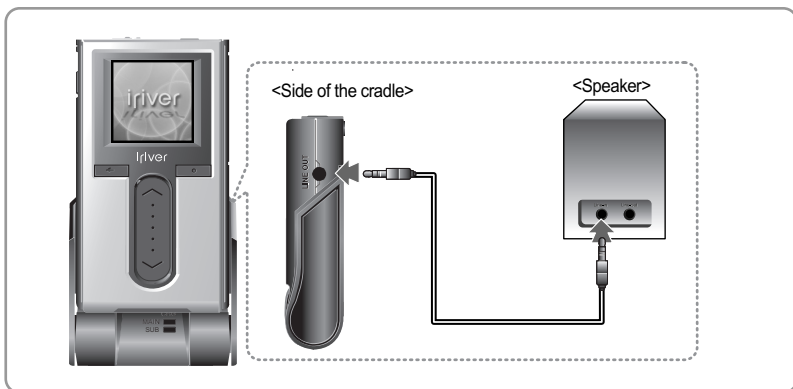
1. Put the player into the connection terminal of the cradle.
2. Connect the Line-in jack of the cradle to the Line-out (or earphone) jack of an external device with a Line-in/out cable. (Line-in/out cable is an optional accessory.)



Connecting the cradle – Line-out connection

(Cradle is an optional accessory.)

1. Put the player into the connection terminal of the cradle.
2. Connect the Line-out jack of the cradle to the input jack of an speaker with a Line-in/out cable. (Line-in/out cable is an optional accessory.)



Installing the software

This manual covers the use of the H10 player hardware. For instructions on related software and instructions for getting music on your player, please see the included iriver plus user manual.

Installing iriver plus

1. The program installation process will start automatically after inserting the Installation CD to the PC's CD-ROM drive. If the program installation process does not start automatically, click the "My Computer" icon and run "iriver_setup_full.exe" file in the CD-ROM drive.
2. If the "Installer Language" window appears, select the desired language and click the [OK] button.



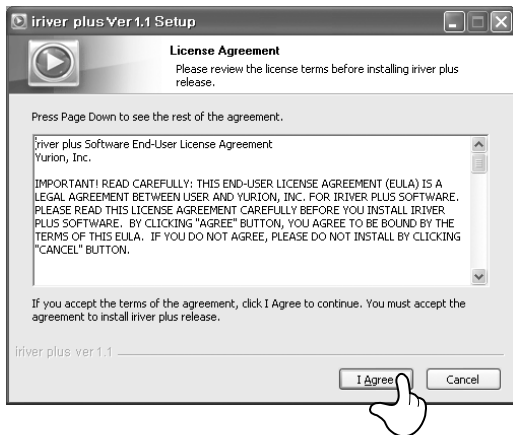
3. Follow the on screen instructions which appear as each window.



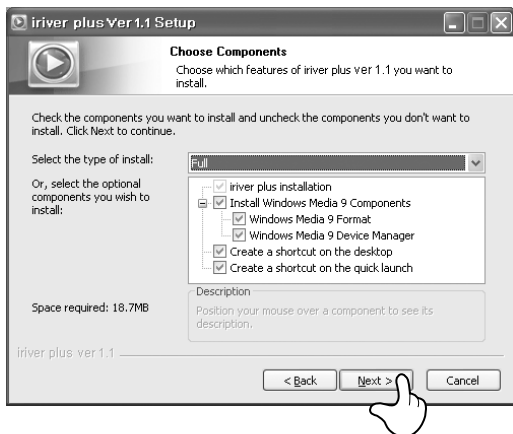
Installing the software

This manual covers the use of the H10 player hardware. For instructions on related software and instructions for getting music on your player, please see the included iriver plus user manual.

4. If the "License Agreement" window appears, click the [I Agree] button.



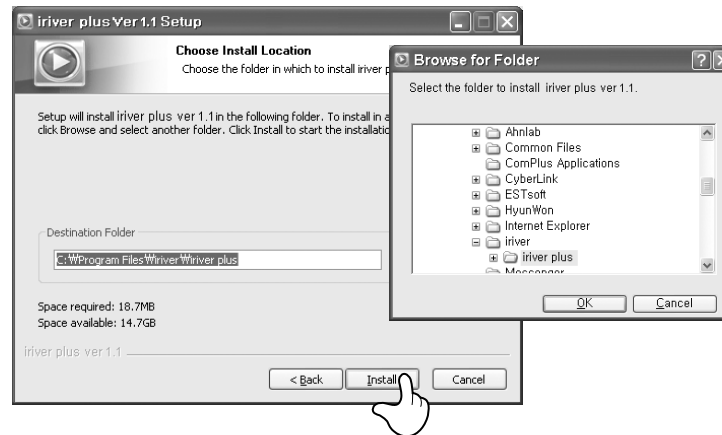
5. Select the components and click the [Next] button.



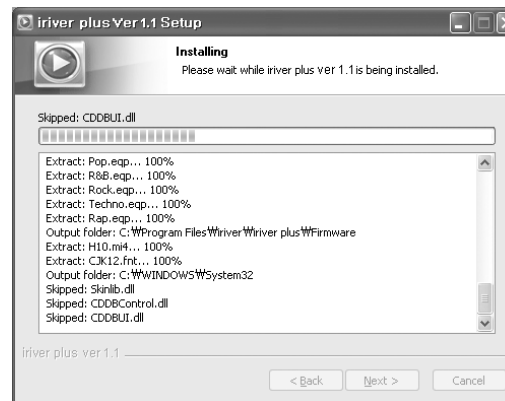
Installing the software

This manual covers the use of the H10 player hardware. For instructions on related software and instructions for getting music on your player, please see the included iriver plus user manual.

6. Select the installation folder and click the [Install] button.



7. The installation process screen appears.

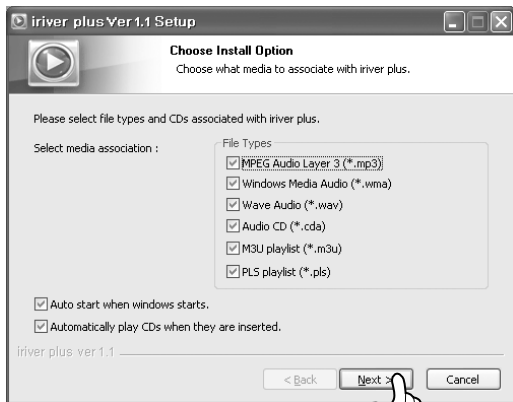




Installing the software

This manual covers the use of the H10 player hardware. For instructions on related software and instructions for getting music on your player, please see the included iriver plus user manual.

8. Select the file type and click the [Next] button.



9. Click the [Finish] button when the installation complete screen is displayed.



Chapter 2 | Quick start

- Tuning on/off the player and Playing music 28
- Controlling volume and changing modes 29

This manual covers the use of the H10 player hardware. For instructions on related software and instructions for getting music on your player, please see the included iriver plus user manual.



Turning on/off the player and playing music

This manual covers the use of the H10 player hardware. For instructions on related software and instructions for getting music on your player, please see the included iriver plus user manual.


Note

- Button image with white background = Press the button quickly.
Button image with black background = Press and hold the button.

Turning on/off the player



1 Turning on the player

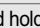
Press the [] button.
The initial screen will be displayed.

Note

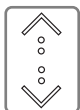
- If the player does not run after pressing the button, check whether the HOLD switch is set to OFF or the battery is discharged.

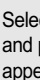
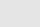


1 Turning off the player

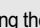
Press and hold the [] button.
The player will be turned off.

Playing music



1 Select the <MUSIC> mode using the [] scroll and press the [] button when the main screen appears.



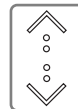
2 After finding the music and press the [] button to play it.

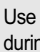
- : Plays the selected title



Controlling volume and changing modes

Controlling volume

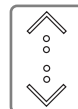


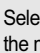
1 Use the [] scroll to control volume during playback.

- ↑ : Volume up
- ↓ : Volume down

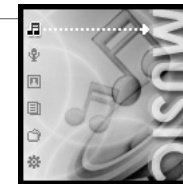


Changing mode

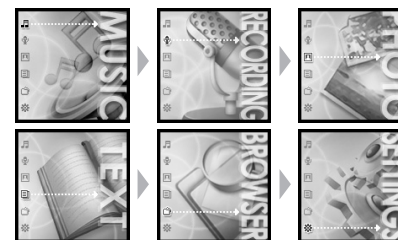


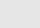
1 Select the mode using the [] scroll when the main menu appears.

There are 6 modes including MUSIC, RECORDING, PHOTO, TEXT, BROWSER, SETTINGS.




Note



2 Press the [] button to enter the desired mode.



3 If you press and hold the [] button in any screen, you can return to the main menu.



Chapter 3 | Basic operation

Playing music	32
Playing music	32
Setting up the Play mode	36
Playlist function	38
Auto Sync function	39
Recording	40
Recording Voice	40
Line-in recording	41
Notices for recording	42
Playing the recorded file	42
Viewing images	43
Viewing image file	43
Getting images on the player	44
Viewing text	45
Viewing text file	45
Getting text files on the player	46
Browser function	47
Browser function	47

This manual covers the use of the H10 player hardware.
For instructions on related software and instructions for getting music on your player, please see the included iRiver plus user manual.



Playing music

This manual covers the use of the H10 player hardware. For instructions on related software and instructions for getting music on your player, please see the included iriver plus user manual.

Playing music

	1 Press the [⏻] button after releasing the HOLD switch to display the initial screen.	
	2 Select the <MUSIC> mode using the [↑/↓] scroll from the main menu.	
	3 Press the [○] button to display the Search screen.	

Note

- In case of selecting <Artists>
Select "Artists – Albums – Titles" to search titles.
- In case of selecting <Albums>
Select "Albums – Titles" to search titles.
- In case of selecting <Genres>
Select "Genres - Artists – Albums – Titles" to search titles.
- In case of selecting <Titles>
Select "Titles" to search titles.
- In case of selecting <Playlists>
(Refer to page 38.)



Playing music

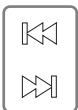
	4 Use the [↑/↓] scroll the select the item. Example: In case of selecting <Titles> [○] : Press it to move to the desired item. [↑/↓] : Moves to the desired item. [↶] : Press to return to the previous screen. [←] : Press and hold to return to the main menu.	
	5 Press the [○] button after selecting the title to play it. During playback, press the [⏸] button to pause playback. Press it again to resume playback.	
	6 Use the [↑/↓] scroll to control volume during playback. ↑ : Volume up ↓ : Volume down	

Note





Playing music



7 Playing previous/next title

Press the [⏮/⏭] button during playback to play previous / next title.

- ⏮ : Plays previous file
- ⏭ : Plays next file



8 Fast-forward / Fast-reverse

Press and hold the [⏮/⏭] button during playback for fast-forward or fast-reverse playback.

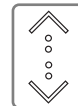
- ⏮ : Fast-reverse
- ⏭ : Fast-forward



Playing music



9 Press the [○] button during playback to display the EQ selection screen.

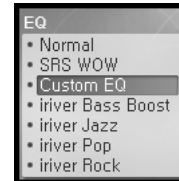
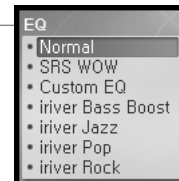


10 Select the EQ using the [↑/↓] scroll and press the [○] button.

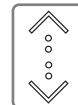


Note

- EQ consists of SRS and 30 Preset EQ.
- To customize SRS and Custom EQ, use the <Sound> menu. (Refer to page 53.)
- SRS uses a combination of Field Width, TruBase, FOCUS and Freq. Boost to enhance sound.
- Custom EQ will be automatically selected after adjusting Custom EQ settings in the <Sound> menu.



11 Press and hold the [●] button during playback to display the MY Rating screen.



12 Select the desired Rating using the [↑/↓] scroll and press the [○] button.



Playing music

Setting up the Play mode

Various Play modes can be used during playback.

	1	Select the <SETTINGS> mode using the [/> scroll when the main screen appears.	
	2	Press the [> button to display the SETTINGS list screen.	
	3	Select <Sound> using the [/> scroll and press the [> button to display the <Sound> list screen.	
	4	Move to the <Play Mode> using the [/> scroll.	
	5	Press the [> button to display the <Play Mode> list screen.	

Playing music

	6	Select the desired Play mode using the [/> scroll and press the [> button to setup the Play mode.	
--	----------	---	--

Note

- The Play mode consists of following options.
 - : **Repeat**
Plays all titles in the selected category repeatedly.
 - : **Repeat 1**
Plays a selected title repeatedly.
 - : **Shuffle**
Randomly plays all titles in the selected category and stop.
 - : **Shuffle + Repeat**
Randomly plays all titles in the selected category repeatedly.



Playlist function

What is Playlist

"Playlist" is a list of the titles that enables you to manage the titles or other audio files. After creating a playlist for the specific mood or by favorite artist, play it in iriver plus or transfer it to H10 using iriver plus.

Now you can play the music at any time and any place.

For more information, refer to the iriver plus instruction manual.

Note

■ In case of selecting <Playlists>

- My Rating
Plays titles in designated rating order.
- My Favorites
Plays titles by playback frequencies.
- Recently Played
Plays titles in recently played order.
- My Playlists
Plays titles with the Playlist you created in iriver plus.
- Quick List
User programmable on-the-fly playlist.
To load the Quick List:
Locate a title using the <MUSIC> menu.
Press and hold [●] to add it to the Quick List.
'Added Quick List!' will be displayed.
Repeat to add more titles to the Quick List.
Use the <Playlists> menu to see the Quick List.
Press [○] button to play it!



Auto Sync function

Auto Sync

If you set H10 and iriver plus with Auto Sync function, all music in the iriver plus library will be automatically transferred to H10.

For more information, refer to the iriver plus instruction manual.

- 1** Connect the player to your PC.
iriver plus will detect the player and open automatically.
- 2** Locate the player in the right side of iriver plus.
Right click on the player, a menu will display.
- 3** Click Sync Options.

Auto Sync:
Music will be automatically synchronized from iriver plus to the player.

Manual Transfer:
Music must be manually added to the player using iriver plus.

Recording

Recording Voice

	<p>1 Select the <RECORDING> mode using the [/] scroll from the main menu.</p>	
	<p>2 Press the [] button to display the Recording Source screen.</p>	
	<p>3 Move to <Voice> using the [/] scroll and confirm it by pressing the [] button.</p>	
	<p>4 Press the [] button to start recording.</p>	
	<p>5 Press the [] button to stop recording.</p>	

Note

- Volume control is not available while recording.
- Keep player at least 12 inches from the recording source to avoid distortion.
- You can change the voice setting in the <Voice Setting> menu. (Refer to page 56.)

Recording

Line-in recording is only available using the optional cradle.

Line-In recording

<p>1</p>	<p>After connecting the player and cradle, connect the cradle's Line-In jack to the Line-Out (or earphone) jack of an external device using the Line-In/Out connection cable.</p>	
	<p>2 In the Recording Source screen, move to <Line-In> using the [/] scroll and confirm it by pressing the [] button.</p>	
	<p>3 Begin playback on the source. Then press the [] button to start recording.</p>	
	<p>4 Press the [] button to stop recording.</p>	

Note

- Volume control is not available while recording.
- You can change the recording quality and volume in the <Line-In Setting> and <Line-In Volume> menus. (Refer to page 56-57.)



Recording

Notices for recording

Note

- Recording is automatically stopped if :
 - The player's memory is full.
 - The battery is low.

Playing the recorded file



- 1 Press the [▶] button in recording standby mode to play the recorded file.



Note

- The recorded file is saved in following locations depending on the SOURCE.

Voice

My Recordings\Voice\VoiceYYMMDDXXX.MP3

Line In

My Recordings\Audio\AudioYYMMDDXXX.MP3
(YYMMDD - Y : Year, M : Month, D : Day)

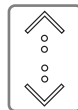
- Use the <BROWSER> menu to select and play files.



Viewing images

Viewing image supports JPG file.

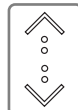
Viewing image file



- 1 Select the <PHOTO> mode using the [↑/↓] scroll from the main menu.



- 2 Press the [○] button to display the Image list screen.



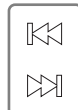
- 3 Move to the desired image file using the [↑/↓] scroll in the Image list screen.



- 4 Press the [○] button to display the Image screen.

Note

- Loading time for large images may take longer.
- The Progressive JPG is not supported in the Viewing image file function.
What is Progressive JPG?
Progressive JPG divides the file into a series of scans. The first scan shows the image at the equivalent of a very low quality setting, and therefore it takes very little space.
Following scans gradually improve the quality.

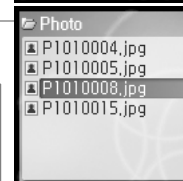
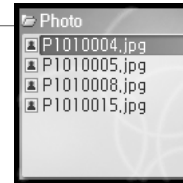


- 5 Press the [◀/▶] button to move to previous/next image.

◀ : Moves to previous image
▶ : Moves to next image

Press the [▶] button to start slide show.

To stop the slide show, press the [▶] button again.





Viewing images

Viewing image supports JPG file.


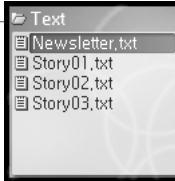
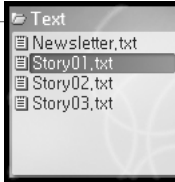
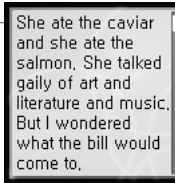
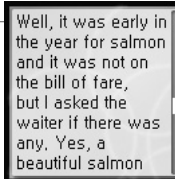
Getting images on the player

- 1 Connect the player and PC using the cable supplied with the player and power it on. (Refer to page 16.)
- 2 Open My Computer :
 - a. Windows XP : Start - My Computer
 - b. Windows 2000 : Double Click the 'My Computer' icon on your desktop.
- 3 Locate your image files, usually found in "My Documents" then "My Pictures", keep this folder open.
- 4 Open a second My Computer window.
- 5 Double click on the H10 device then double click on the "Media" folder.
- 6 To get images on the player, click and drag the image files from your PC to the "Photo" folder on the H10.
- 7 A progress window will appear while files are copying.
- 8 Disconnect the USB cable once all copying has finished.



Viewing text

Viewing text file

- 1 Select the <TEXT> mode using the [↑/↓] scroll when the main screen appears.
 
- 2 Press the [○] button to display the Text list screen.
 
- 3 Move to the desired text file using the [↑/↓] scroll in the Text list screen.
 
- 4 Press the [○] button to display the Text screen.
 
- 5 Use the [↑/↓] scroll to move to the previous/next line during reading text.
 



Viewing text

6 Use the [◀◀/▶▶] scroll to move to the previous/next page during reading text.

◀◀ : Page up
▶▶ : Page down

"I think you are unwise to eat meat," she said, "I don't know how you can expect to work after eating heavy things like chops."

7 Press the [○] button while viewing text to move to the desired page.

[◀◀/▶▶] : Selects the location
[▲/▼] : Selects the number
[○] : Moves to the desired page

Believing in Santa Claus isn't easy when all your friends are laughing at you. I've seen a girl who was afraid of one elf named Eve when he's awakened by a steam tra

Getting text files on the player

- 1** Connect the player and PC using the cable supplied with the player and power it on. (Refer to page 16.)
- 2** Open My Computer :
 - a. Windows XP : Start - My Computer
 - b. Windows 2000 : Double Click the 'My Computer' icon on your desktop.
- 3** Locate your text (.TXT) files, keep this folder open.
- 4** Open a second My Computer window.
- 5** Double click on the H10 device then double click on the "Media" folder.
- 6** To get text on the player, click and drag the text files from your PC to the "Text" folder on the H10.
- 7** A progress window will appear while files are copying.
- 8** Disconnect the USB cable once all copying has finished.



Browser function

Browser function

The Browser allows you to navigate all the files on the player. You can play titles, view images, or display text files without switching modes. Several advanced features of each mode will not be available, such as the image slide show, Artist and Genre searching, etc.

1 Select the <BROWSER> mode using the [▲/▼] scroll on the main menu.

2 Press the [○] button to display all files in the player as a tree view.



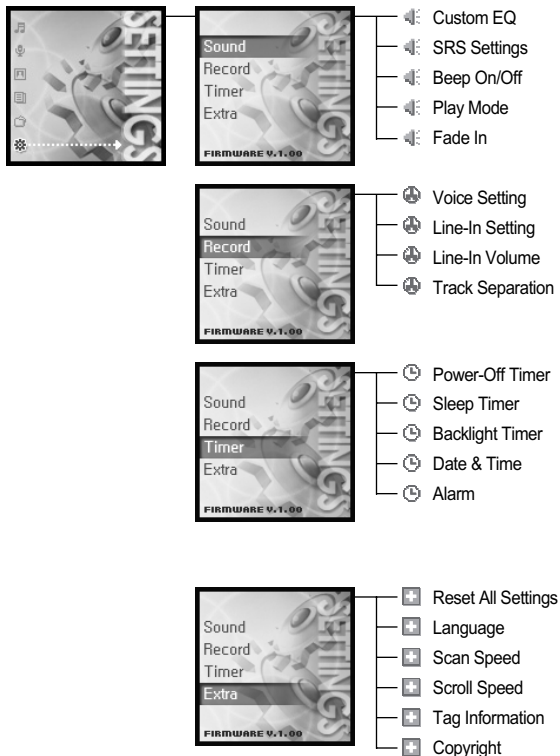
Chapter 4 | Useful features

Settings Menu.....	50
Settings menu navigation	51
Changing menu	51
Entering the sub menu	51
Customizing the function settings	52
Exit the sub menu	52
Menu settings	53
Sound	53
Record	56
Timer.....	58
Extra	61



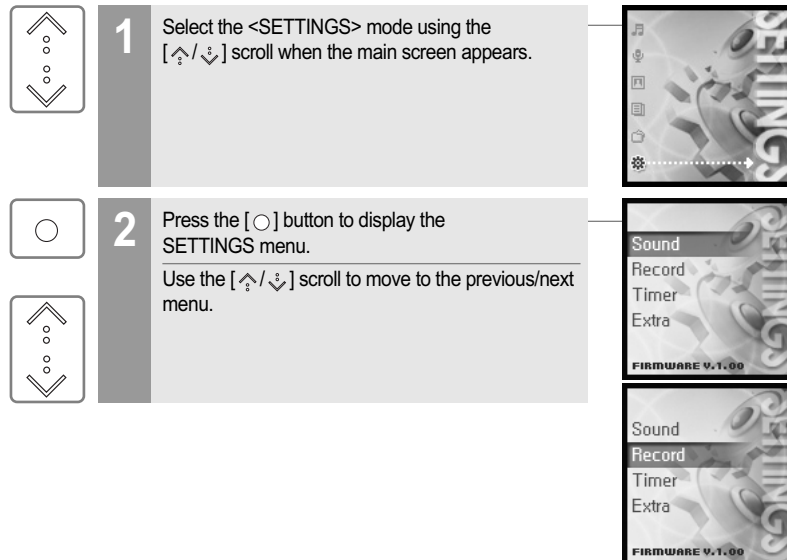
Settings Menu

Function control is subject to change with different firmware versions.
User can configure their own settings.

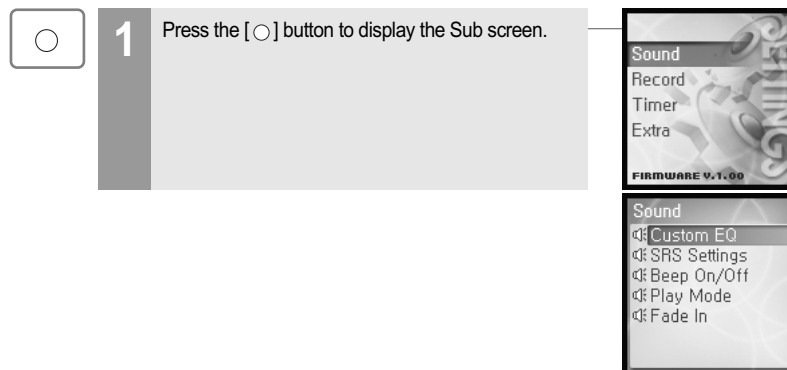


Settings menu navigation

Changing menu



Entering the sub menu







Settings menu navigation

Customizing the function settings


1 Use the [\uparrow/\downarrow] scroll on the main menu.



2 Press the [\circ] button to display the contents of that sub menu.




3 Press the [\uparrow/\downarrow , \circ] button to customize the function setting.



Exit the sub menu

1 Press the [\leftarrow] button to exit the sub menu.
Press and hold the [\leftarrow] button to return to the main menu.




Menu settings

Sound

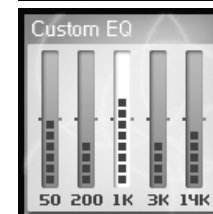
1. Custom EQ

Various frequency bands can be selected and customized.

Each frequency level is from -12dB to 12dB in steps of 2dB .

[\circ] : Changes frequency band

[\uparrow/\downarrow] : Selects frequency level



2. SRS Settings

Sets the level of 3D effect.

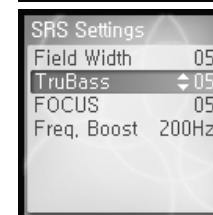
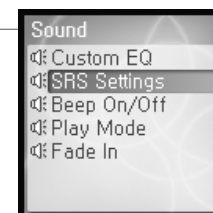
There are 4 types of 3D effect including Field Width, TruBass, FOCUS and Freq. Boost.

Field Width : Sets the Field width value.

TruBass : Sets the Trubass value.

FOCUS : Sets the sound resolution.

Freq. Boost : Sets the sound boost value.





Menu settings

3. Beep On/Off

Sets the beep volume for moving cursor.

Select <On> or <Off> using the [↑ / ↓] scroll and press the [○] button to confirm it.



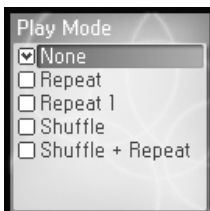
4. Play Mode

Sets the Play mode.

(For more information about the Play mode, refer to page 36.)

The Play mode can be changed only in the <SETTINGS> – <Sound> - <Play Mode>.

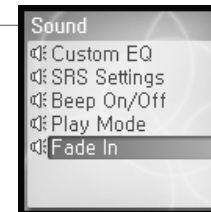
Select the Play mode using the [↑ / ↓] scroll and press the [○] button to confirm it.



Menu settings

5. Fade In

When activated, volume increases gradually at playback mode.





Menu settings

Record

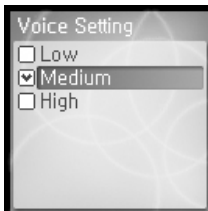
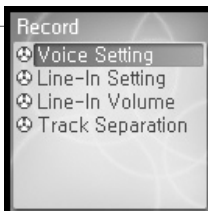
1. Voice Setting

Sets the quality of voice recording.

Select <Low>, <Medium>, <High> using the [\uparrow / \downarrow] scroll and press the [\circ] button to confirm it.

The available recording times depending on the recording qualities are as follows.

Low	: 338 hours
Medium	: 169 hours
High	: 84 hours and 30 minutes



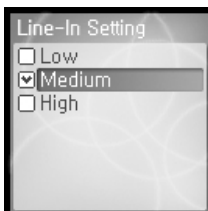
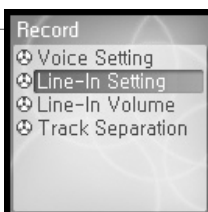
2. Line-In Setting

Sets the quality for recording from external device.

Select <Low>, <Medium>, <High> using the [\uparrow / \downarrow] scroll and press the [\circ] button to confirm it.

The available recording times depending on the recording qualities are as follows.

Low	: 84 hours and 30 minutes
Medium	: 56 hours and 20 minutes
High	: 33 hours and 50 minutes



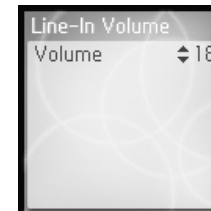
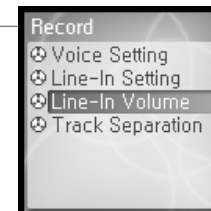
Menu settings

3. Line-In Volume

Controls volume for recording from external device.

<1 to 21> levels are available.

Select the volume using the [\uparrow / \downarrow] scroll and press the [\circ] button to confirm it.



4. Track Separation

While recording from external device, if no sound occurs for around 1.5 minutes, a new file will be created.

If you use the <Track Separation> function with connecting external devices such as CD or tape, each track will be save to an individual file.

Select <On> or <Off> using the [\uparrow / \downarrow] scroll and press the [\circ] button to confirm it.





Menu settings

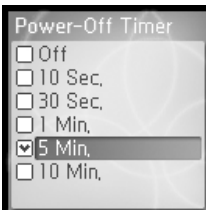
Timer

1. Power-Off Timer

Automatically turns the power off at stop mode after fixed time.

The available time settings are <Off>, <10 Sec.>, <30 Sec.>, <1 Min.>, <5 Min.>, <10 Min.>.

Select the time using the [↑/↓] scroll and press the [○] button to confirm it.

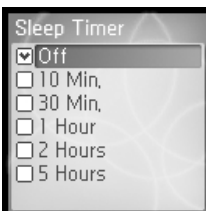
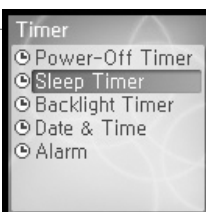


2. Sleep Timer

Automatically turns the power off after fixed time.

The available time settings are <Off>, <10 Min.>, <30 Min.>, <1 Hour>, <2 Hours>, <5 Hours> and if it is set to <Off>, the power will not be turned off.

Select the time using the [↑/↓] scroll and press the [○] button to confirm it.



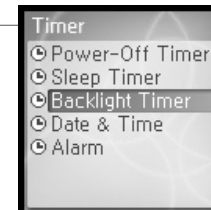
Menu settings

3. Backlight Timer

Sets the time that the backlight stays on.

The available time settings are <Always On>, <5 Sec.>, <30 Sec.>, <1 Min.>, <5 Min.>, <30 Min.>.

Select the time using the [↑/↓] scroll and press the [○] button to confirm it.

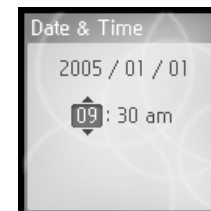
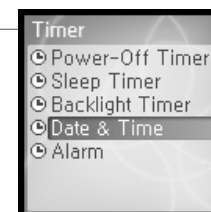


4. Date & Time

Sets the current time.

[○] : Selects item

[↑/↓] : Sets the current time





Menu settings

5. Alarm

Sets the alarm time.

Select the time using the [↑/↓] scroll and press the [○] button to confirm it.

Then select <Yes> using the [↑/↓] scroll and press the [○] button to activate the alarm function.



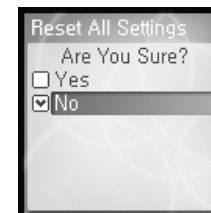
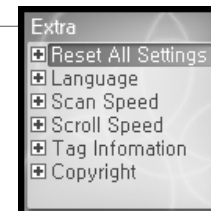
Menu settings

Extra

1. Reset All Settings

Initializes all settings to original factory setting (if Yes is selected).

Select <Yes> or <No> using the [↑/↓] scroll and press the [○] button to confirm it.

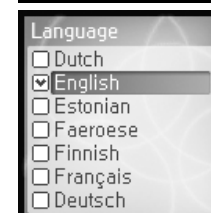


2. Language

Select the language to match the language of your music ID3 tags for proper display.

40 languages are supported in this function.

Select the language using the [↑/↓] scroll and press the [○] button to confirm it.





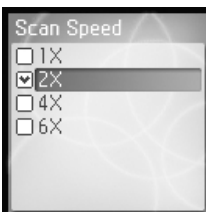
Menu settings

3. Scan Speed

Sets the speed of fast scan.

The available speed range are <1X>, <2X>, <4X>, <6X>.

Select the speed using the [/] scroll and press the [] button to confirm it.

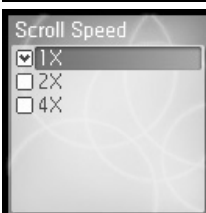


4. Scroll Speed

You can adjust the scroll speed (Title or Artist Name of the song) displayed on the LCD.

The available speed range are <1X>, <2X>, <4X>.

Select the speed using the [/] scroll and press the [] button to confirm it.



Menu settings

5. Tag Information

Displays file information with ID3 Tag information and changes the configuration of Tag information.

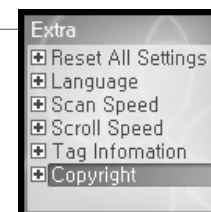
<Off>, only the file name will display.

Select <On> or <Off> using the [/] scroll and press the [] button to confirm it.



6. Copyright

Press the [] button to see copyright information.



iriver

©1999-2005 iriver Limited.
All rights reserved.
iriver and the iriver logo
are trademarks of iriver
Limited., registered in
Korea & other countries.
H10 is a trademark of
iriver Limited.



Chapter 5 | Additional information

Firmware upgrade	66
Initializing H10	67
Troubleshooting	68

This manual covers the use of the H10 player hardware. For instructions on related software and instructions for getting music on your player, please see the included iRiver Plus user manual.



Firmware upgrade

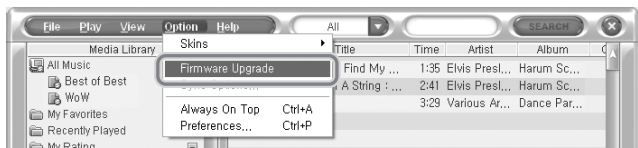
What is firmware ?

It is the operating system that works in the H10.
iriver provides you with the latest and best features through Firmware upgrade.

You can choose manual or automatic upgrade function.
For information on automatic upgrade, refer to the iriver plus instruction manual.

Manual firmware upgrade

- 1 Select [Option - Firmware Upgrade] from the menu in iriver plus.



Note

- Do not disconnect H10 during firmware upgrade.
- Internet must be connected for the "Firmware Update" function.
- Change to "Player must be connected to the PC for Firmware Upgrade function."



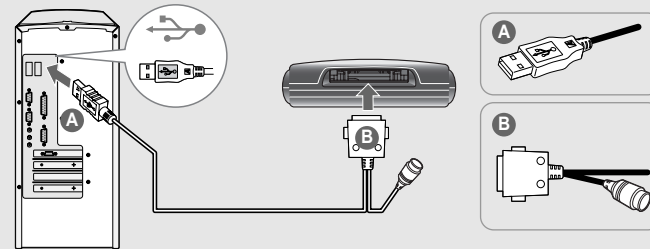
Initializing H10

Initializing H10

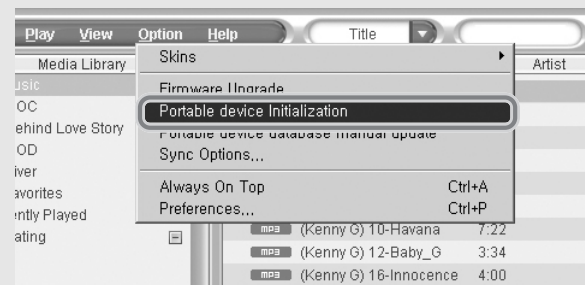
Please initialize H10 player in the following cases.
All music, pictures, text, and data will be erased from the player during this initialization.

- if there appears to be corruption on the internal hard drive.
- if an error message displays and the player doesn't boot properly.

- 1 Connect the player and PC using the cable supplied with the player.



- 2 Open iriver plus.
Select [Option-Portable Device Initialization].



- 3 Click [Start] to begin initializing.



Troubleshooting

Symptom	Possible solutions
The player will not power on.	<ul style="list-style-type: none"> ■ Check whether the HOLD switch on the player is ON. (Switch it to OFF position.) ■ Check whether the battery is discharged. ■ Check it again after connecting the AC adapter. ■ Check whether the battery is connected correctly. ■ If the power is still turned on after charging, please contact iriver customer support.
No sound during playback.	<ul style="list-style-type: none"> ■ Check whether volume is set to "0". ■ Connect the earphones plug firmly.
Buttons do not work.	<ul style="list-style-type: none"> ■ Check whether the HOLD switch on the player or remote control is ON. Switch it to OFF position and try it again.
Noise and distortion during playback.	<ul style="list-style-type: none"> ■ Check whether the plug or connection jack of earphone is dirty. Dirty connectors may cause noise. ■ Check whether the music file is corrupted. Check it again with other music file. If the file data is corrupted, noise or distortion may result.
Characters in LCD are corrupted.	<ul style="list-style-type: none"> ■ Check whether the right language is selected. The language setting can be changed in <SETTINGS> - <Extra> - <Language>.



Troubleshooting

Symptom	Possible solutions
Failed download.	<ul style="list-style-type: none"> ■ Check whether the USB cable is firmly connected. ■ Check whether the AC adapter is connected. If the remaining battery amount is not sufficient, download may not be available.
The titles saved in H10 are not played.	<ul style="list-style-type: none"> ■ Audio titles listed under <MUSIC> will only play if they were loaded using iriver plus or Windows Media Player. Use the BROWSER function to locate and play your files. ■ If the files still do not play, it is possible they are in a format not compatible with this player. Please consult with the program or service used to originally retrieve the titles.

iriver ◀ 🎵 🔌 📺 📖 📁 🌐

◀ **Chapter 6 | Appendix**

Specifications	72
FCC	73



Specifications

Category	Item	Specifications
HDD	Capacity	5GB*
	File system	FAT 32
PC	Supported OS	Windows 2000 / XP
	Interface	USB 2.0
Audio	Frequency range	20Hz~20KHz
	Headphone output	15mW (L) + 15mW (R) at 16Ω Max. Volume
	S/N ratio	90dB(MP3)
	Frequency range	± 3dB
	No. of channels	Stereo (L/R)
File support	File type	MP3(MPEG 1/2/2.5 Layer3), WMA, TXT, JPG**
	Bit Rate	MP3 : 32Kbps~320Kbps WMA : 32Kbps~192Kbps
	Tag	ID3 V1, ID3 V2 2.0, ID3 V2 3.0, ID3 V2 4.0
Power supply	AC Adaptor	DC 5.0V, 2.0A
	Battery	Rechargeable battery
General	Dimensions	95.5 X 54.6 X 15 (mm)
	Weight	Approx. 96.2 g
	LCD	1.5" 260,000 TFT LCD
	Operational temperature	-5 °C ~ 40 °C
	Max. playtime	Approx. 12 hours (When used with 128 Kbps, MP3, 20 Volume level, EQ Normal, LCD off)

* 1GB = 1,000,000,000 Bytes

Not all memory available for storage.

** The Progressive JPG is not supported.



FCC

Federal Communications Commission (FCC)

The device manufactured and found to comply with limits for a Class B computing device according to the specifications in FCC rules Part 15. Operation is subject to the following two conditions;

1. This device may not cause harmful interference.
2. This device must accept any interference received, including interference that may cause undesired operation.
3. If your device needs repairs, you must arrange for the manufacturer to make them if you are to keep the device's FCC registration valid.

This equipment, like other electronic equipment, generates and uses radio frequency energy. If not installed and used according to the instructions in this manual, this equipment may cause interference with your radio and television reception.

If you think this equipment is causing interference with your radio or television reception, try turning the equipment off and on. If the interference problems stop when the equipment is switched off, then the equipment is probably causing the interference. You may be able to correct the problem by doing one or more of the following:

- Adjust the position of the radio or TV antenna
- Move away the device from the radio or TV

If necessary, consult your dealer or an experienced radio or television technician. You may find this booklet helpful: "How to Identify and Resolve Radio and TV Interference Problems" (Stock No. 004-000-00345-4), prepared by the FCC and available from the U.S Government Printing Office, Washington, DC 20402. See individual devices FCC ID and registration numbers.

For the customers in Europe



The CE mark on the CD player is valid only for products marketed in the European Union.



A series of horizontal dotted lines for writing, spanning the width of the page.